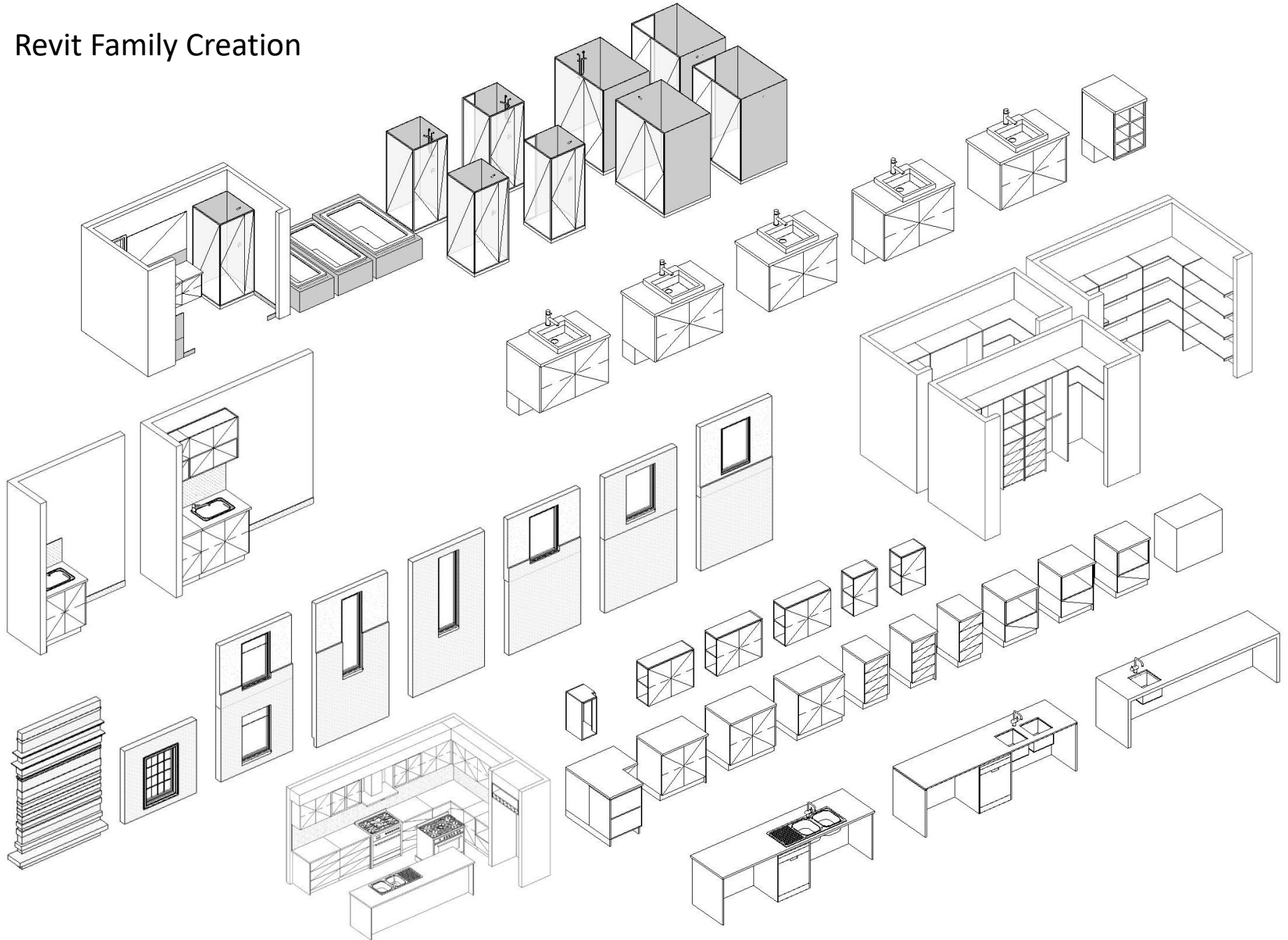




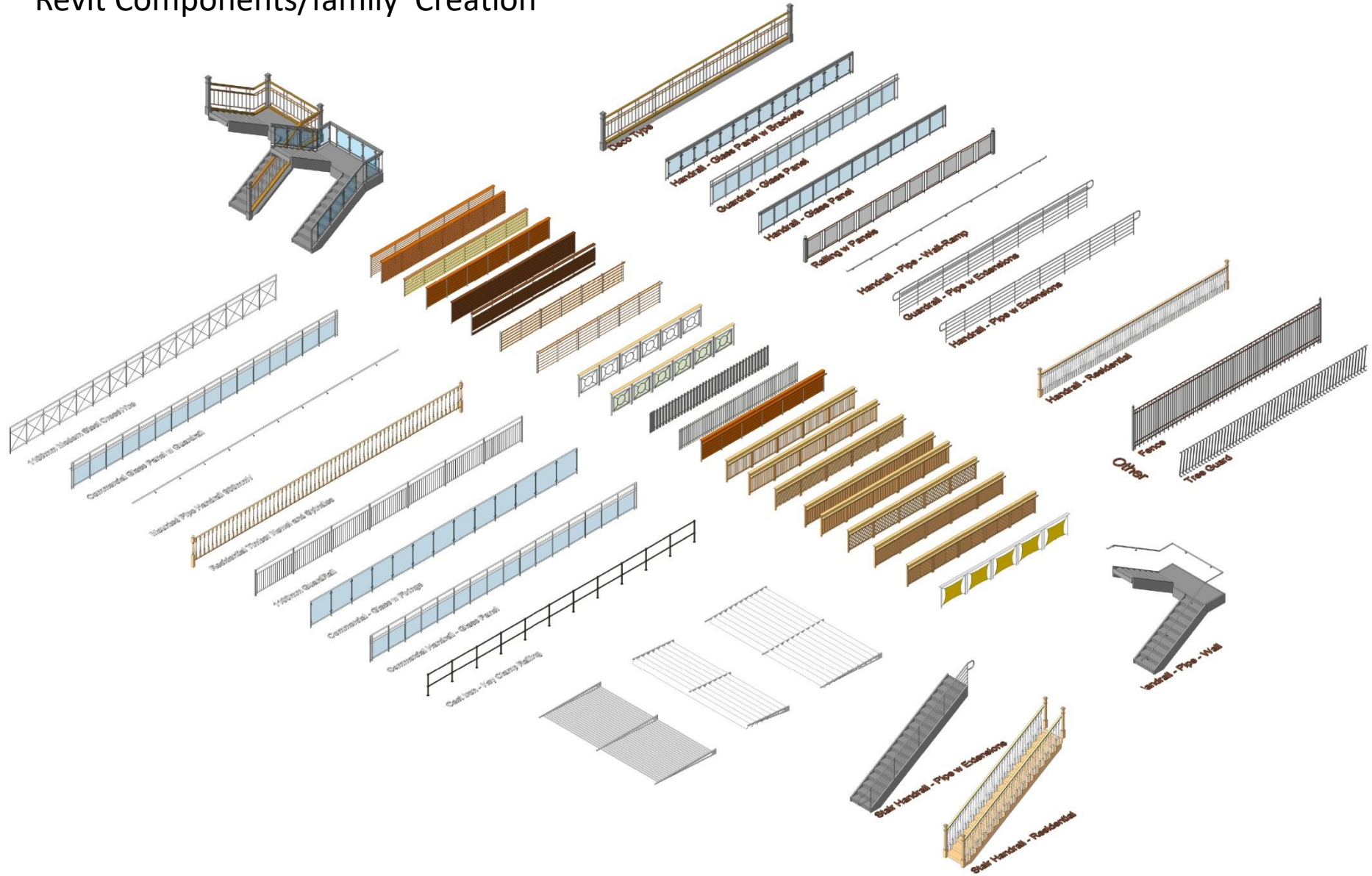
# Revit BIM & Architecture Services Presentation

12<sup>th</sup> October 2021

# Revit Family Creation

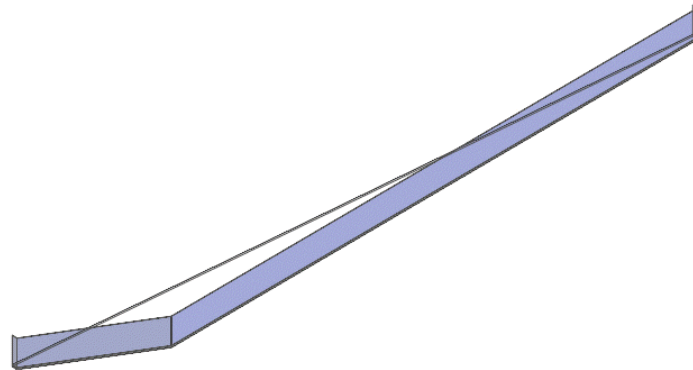
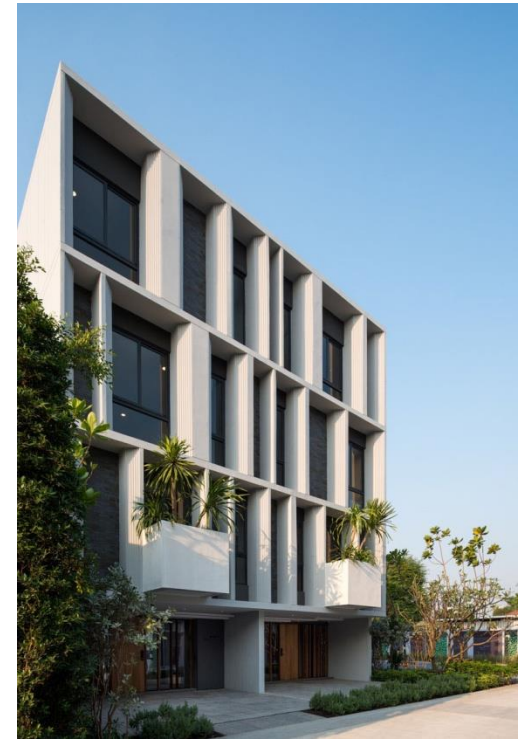
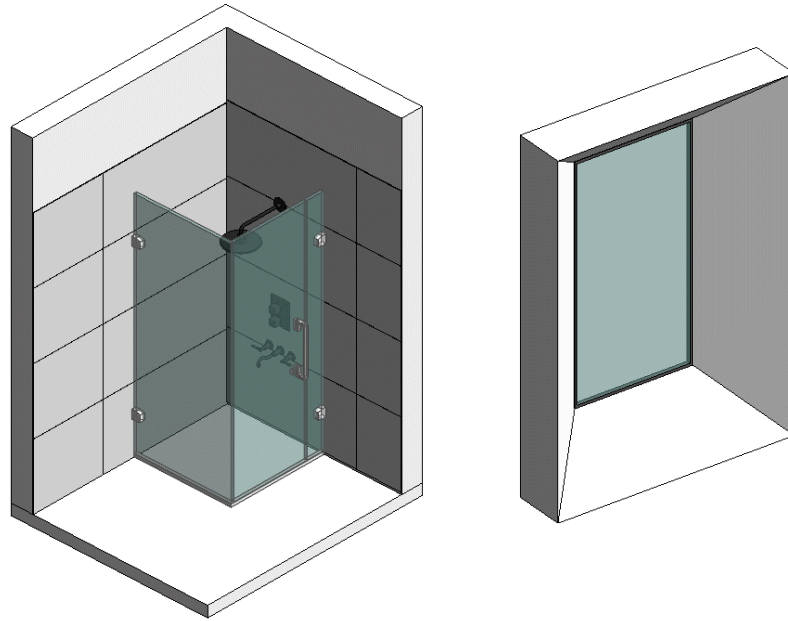


# Revit Components/family Creation

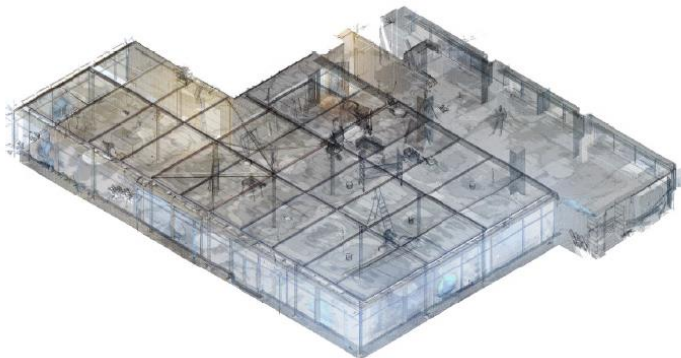
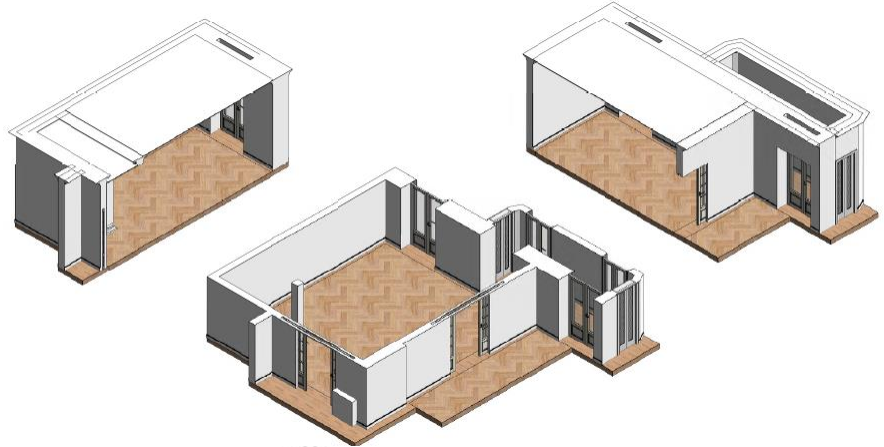
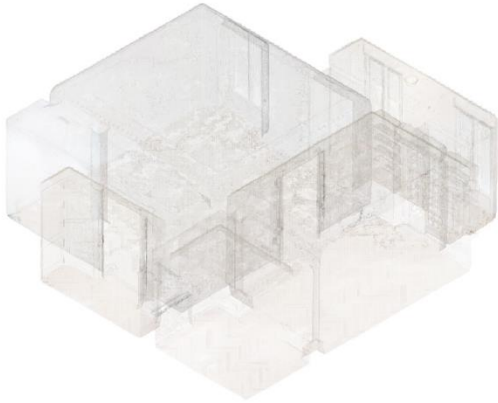
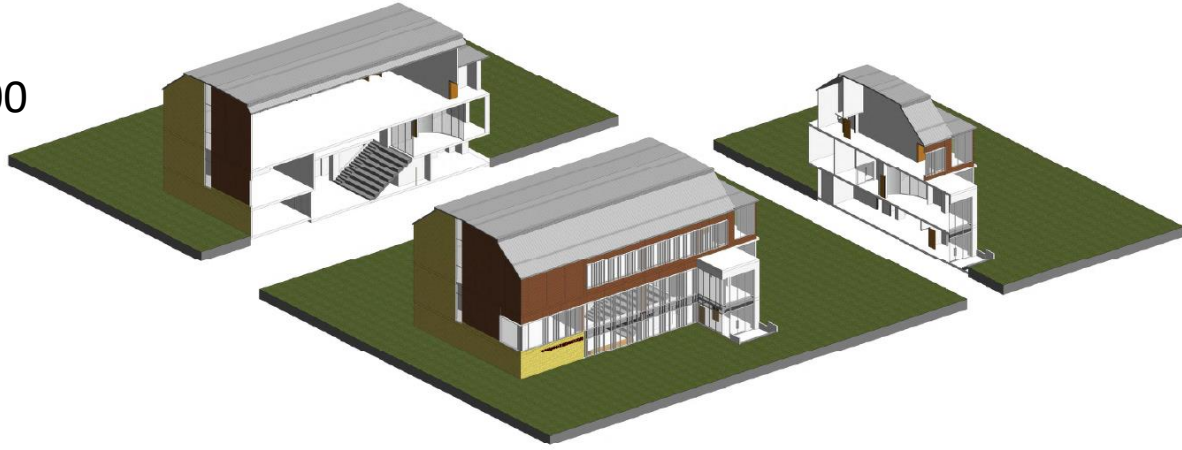




## Parametric Revit Family Creation

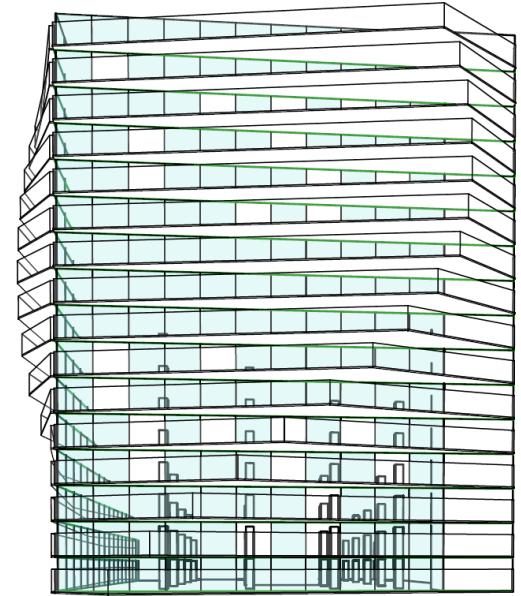
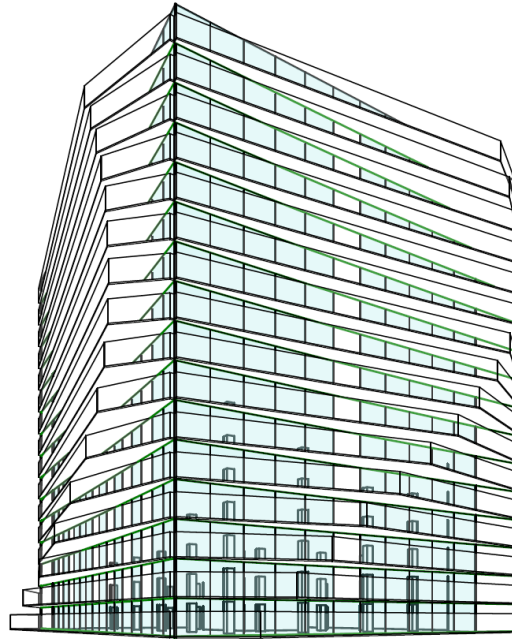
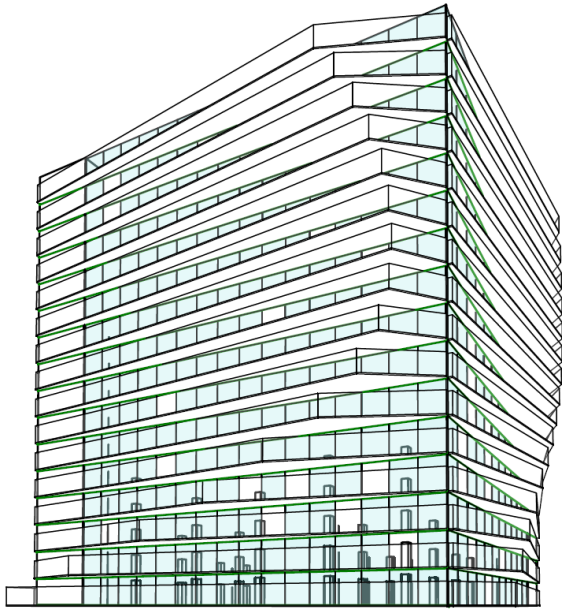
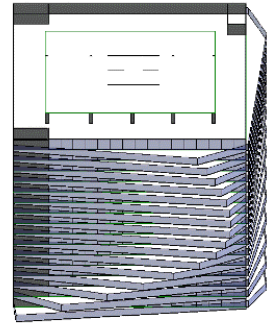


# Point cloud data to LOD 100 to 400 revit models

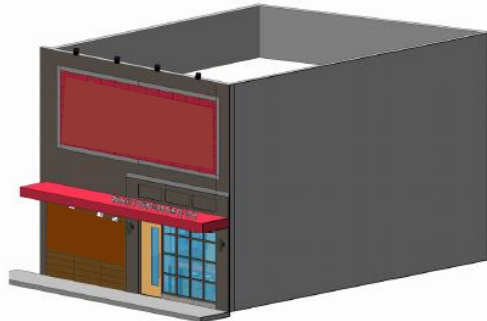
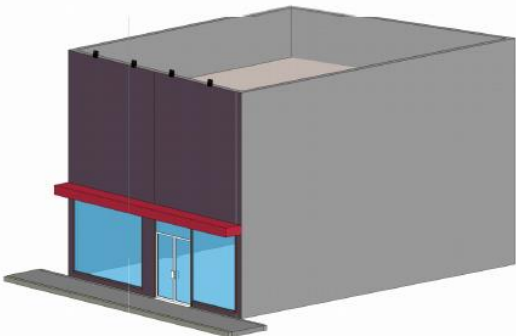
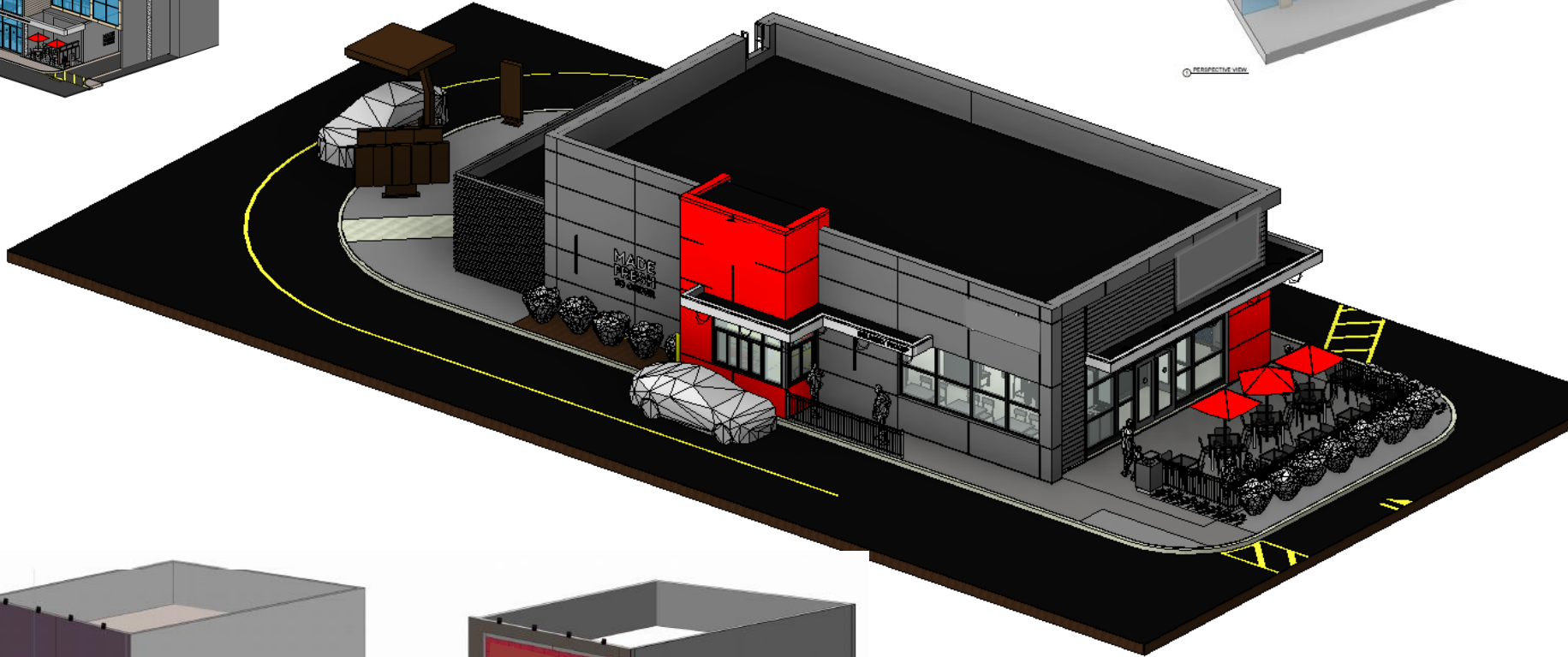
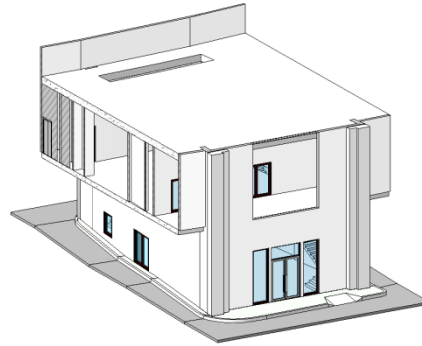
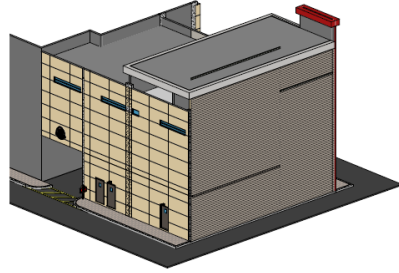
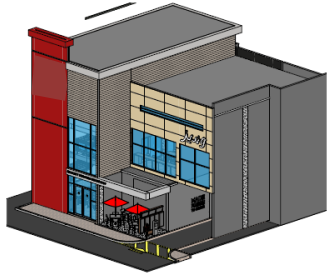




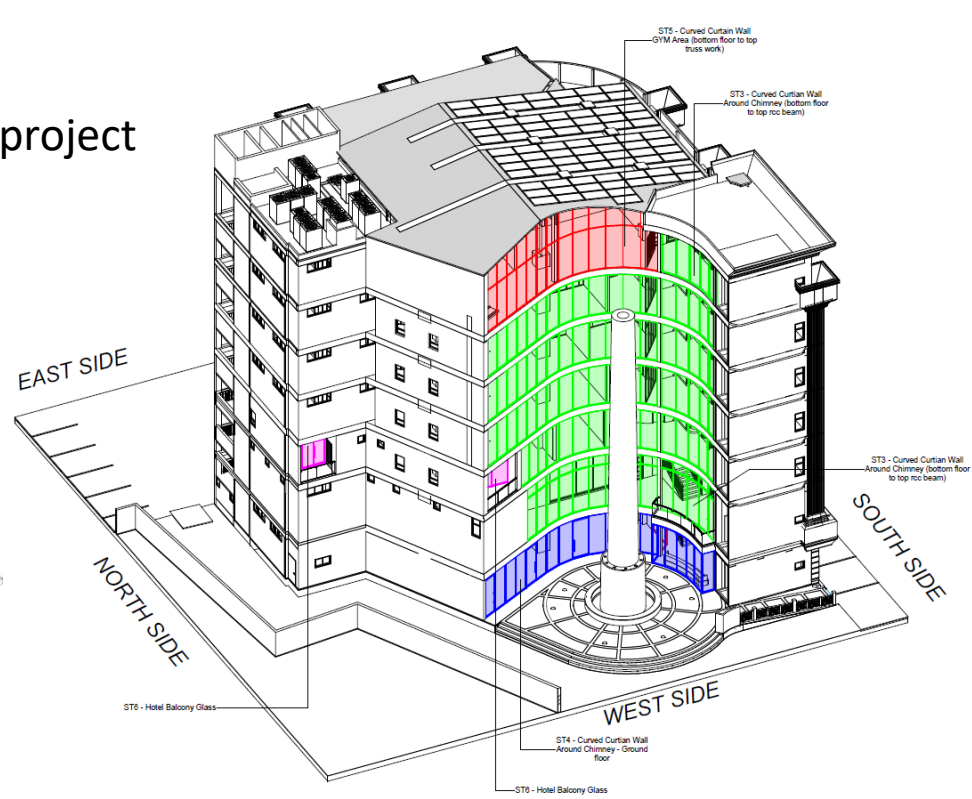
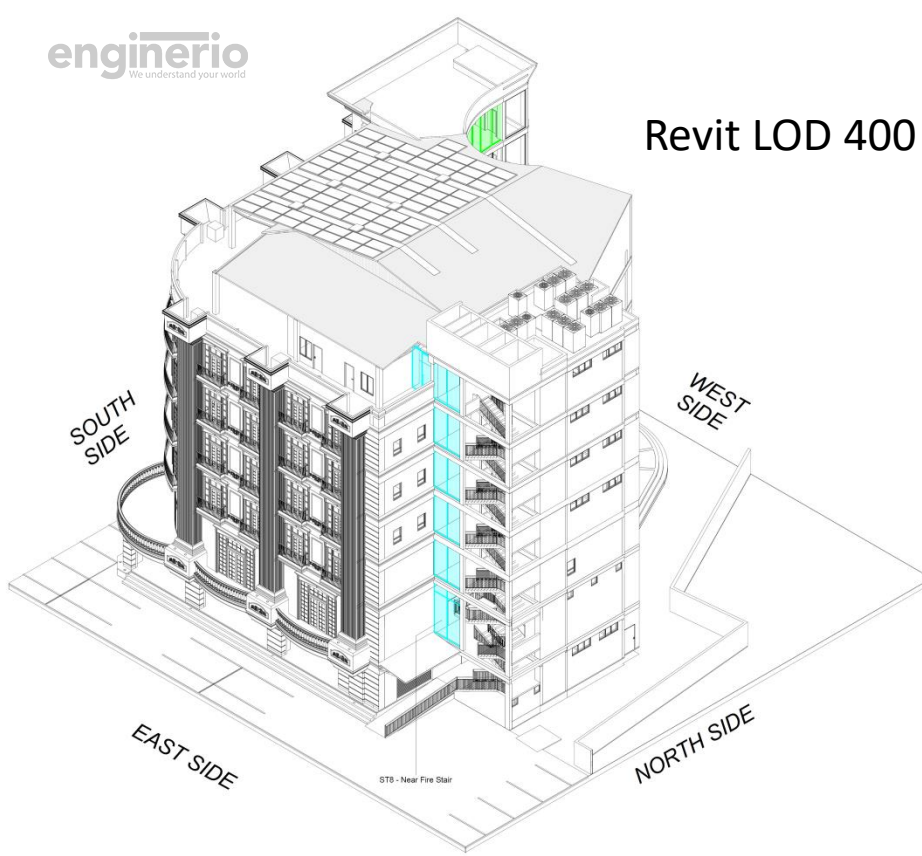
# Revit LOD 300 models



# Revit LOD 400 projects



# Revit LOD 400 project



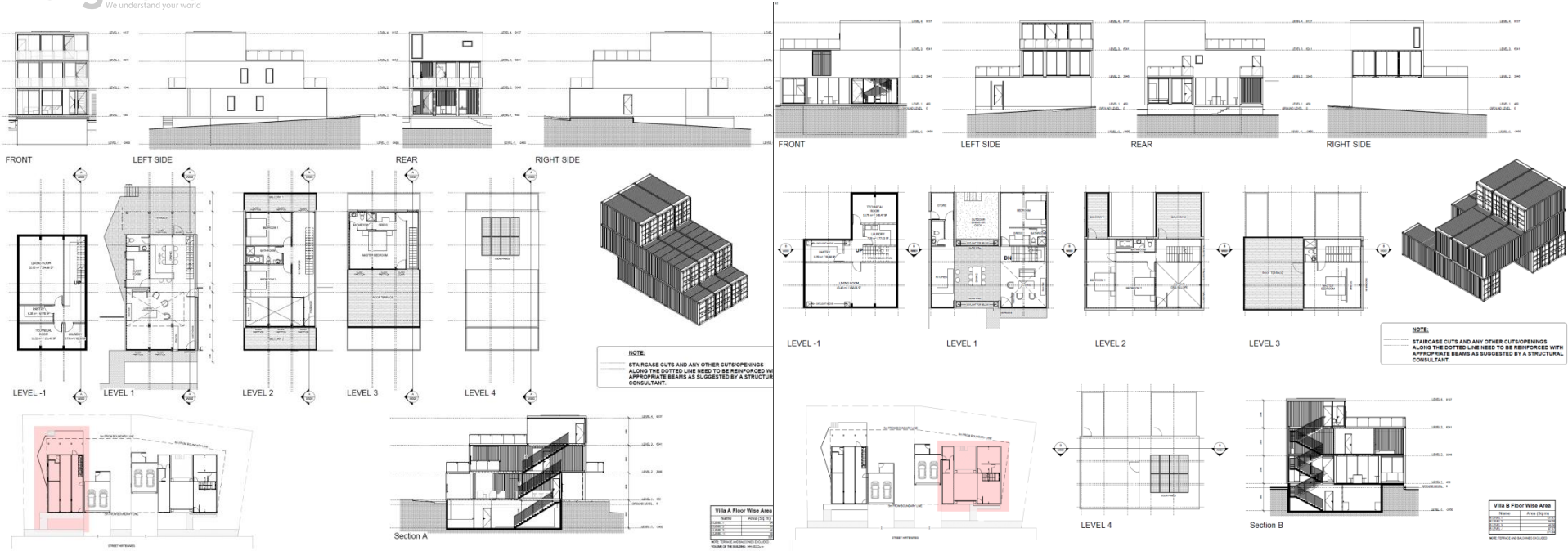
Exterior Glass Curtain Wall - Material Wise		
Type	Description	Area (Sqm)
ST3 - Curved Curtian Wall Around Chimney (bottom floor to top rcc beam)	TINTED - DG - Curtain Wall - Curved - Single Door Opening at First Floor Balcoony	355.24
ST4 - Curved Curtian Wall Around Chimney - Ground floor	CLEAR - DG - Curtain Wall - Curved - 4 Single Doors 2 Double Doors.	75.65
ST5 - Curved Curtain Wall GYM Area (bottom floor to top truss work)	TINTED - DG - Curtain Wall - Straight + Curved Around Chimney with maximum height of 6m	82.38
ST6 - Hotel Balcony Glass	TINTED - DG - Curtain Wall - Straight - 2 separate walls with single door in each wall.	19.40
ST7 - Lift Glass wall	TINTED - DG -Curtain Wall - Straight - Fixed - Preferably Single Piece	47.46
ST8 - Near Fire Stair	TINTED - DG - Curtain Wall - Straight	57.95
		638.08

## Exterior Glass Curtain Wall - Floor Wise

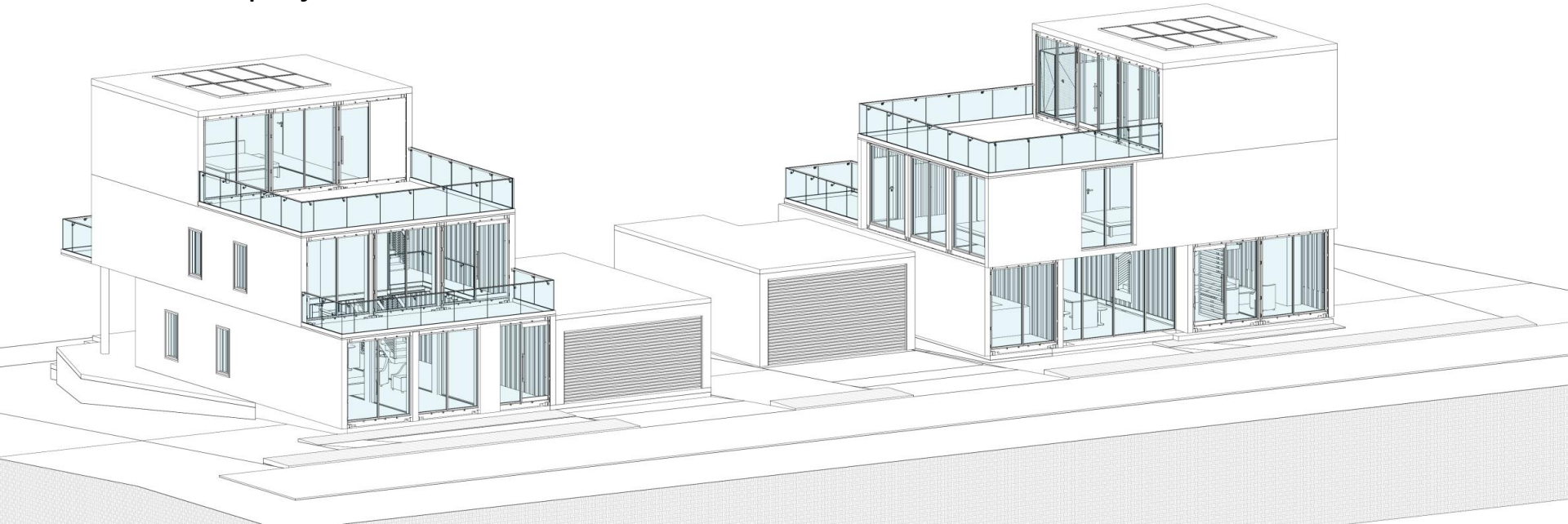
Type	Height	Length	Area (Sqm)
<b>0 GROUND FLR</b>			
ST4 - Curved Curtian Wall Around Chimney - Ground floor	3300	23024	75.65
ST7 - Lift Glass wall	3250	1990	6.47
<b>1 FIRST FLR</b>			
ST3 - Curved Curtian Wall Around Chimney (bottom floor to top rcc beam)	4350	19950	72.58
ST7 - Lift Glass wall	4350	1990	8.68
ST8 - Near Fire Stair	4200	2711	10.61
<b>2 SECOND FLR</b>			
ST3 - Curved Curtian Wall Around Chimney (bottom floor to top rcc beam)	3250	17127	55.74
ST6 - Hotel Balcony Glass	3000	6760	19.40
ST7 - Lift Glass wall	3250	1990	6.47
ST8 - Near Fire Stair	3100	2688	8.05
<b>3 THIRD FLR</b>			
ST3 - Curved Curtian Wall Around Chimney (bottom floor to top rcc beam)	3250	20947	68.16
ST7 - Lift Glass wall	3250	1990	6.47
ST8 - Near Fire Stair	3100	2566	8.05
<b>4 FOURTH FLR</b>			
ST3 - Curved Curtian Wall Around Chimney (bottom floor to top rcc beam)	3250	21922	71.33
ST7 - Lift Glass wall	3250	1990	6.47
ST8 - Near Fire Stair	3100	2566	8.05
<b>5 FIFTH FLR</b>			
ST3 - Curved Curtian Wall Around Chimney (bottom floor to top rcc beam)	3250	20947	68.16
ST7 - Lift Glass wall	3250	1990	6.47
ST8 - Near Fire Stair	3100	2566	8.05
<b>6 TERRACE FLR</b>			
ST3 - Curved Curtian Wall Around Chimney (bottom floor to top rcc beam)	3250	5921	19.27
ST5 - Curved Curtian Wall GYM Area (bottom floor to top truss work)	3250	15456	82.38
ST7 - Lift Glass wall	3250	1990	6.47
ST8 - Near Fire Stair		4466	14.84



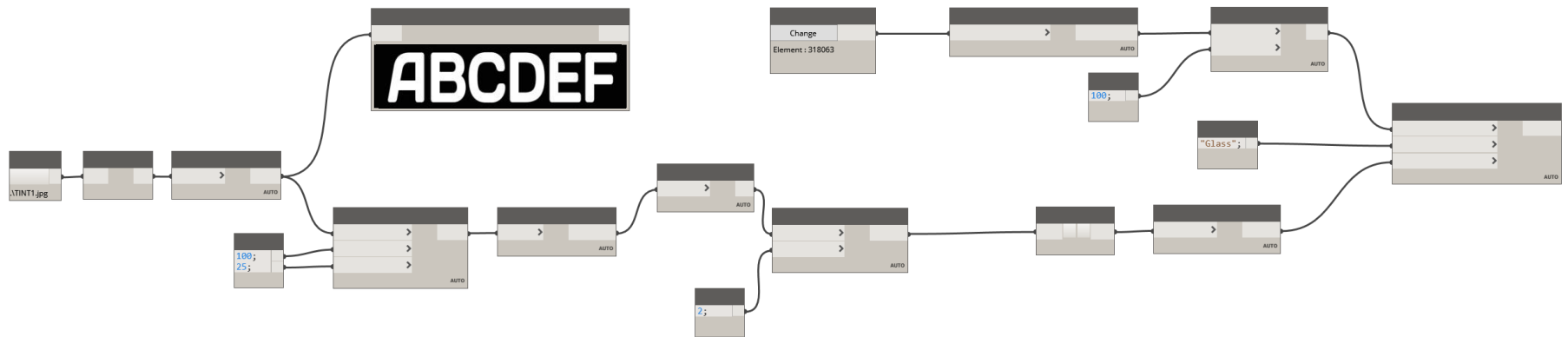
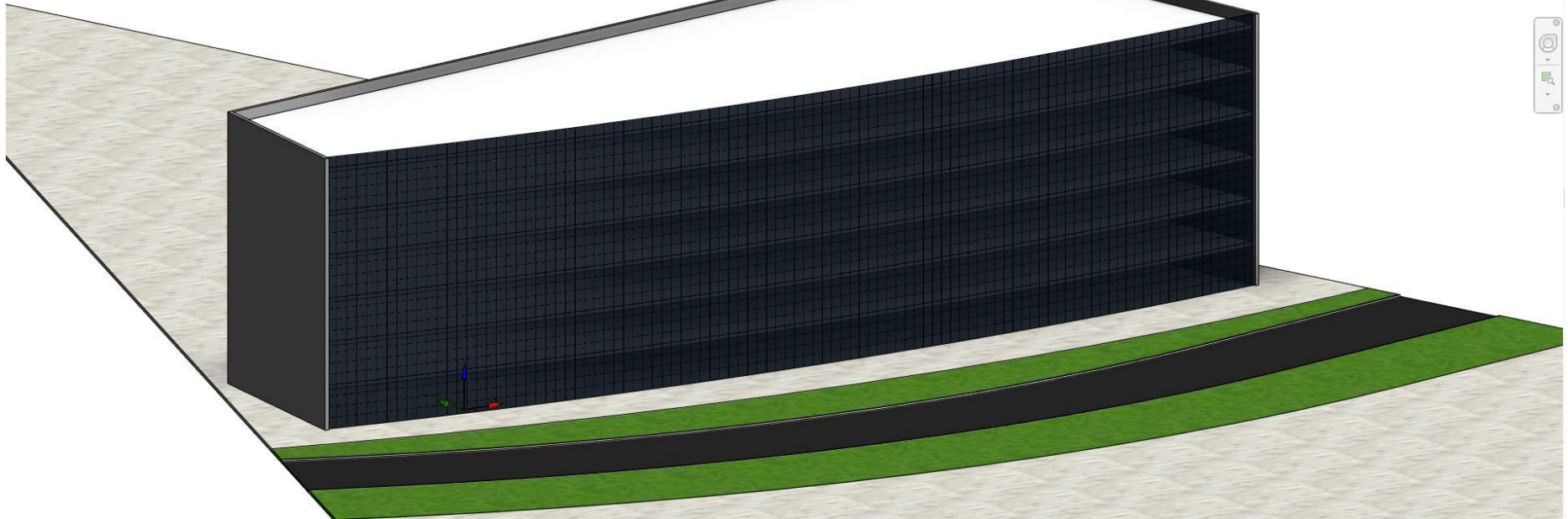




# Revit LOD 300 project



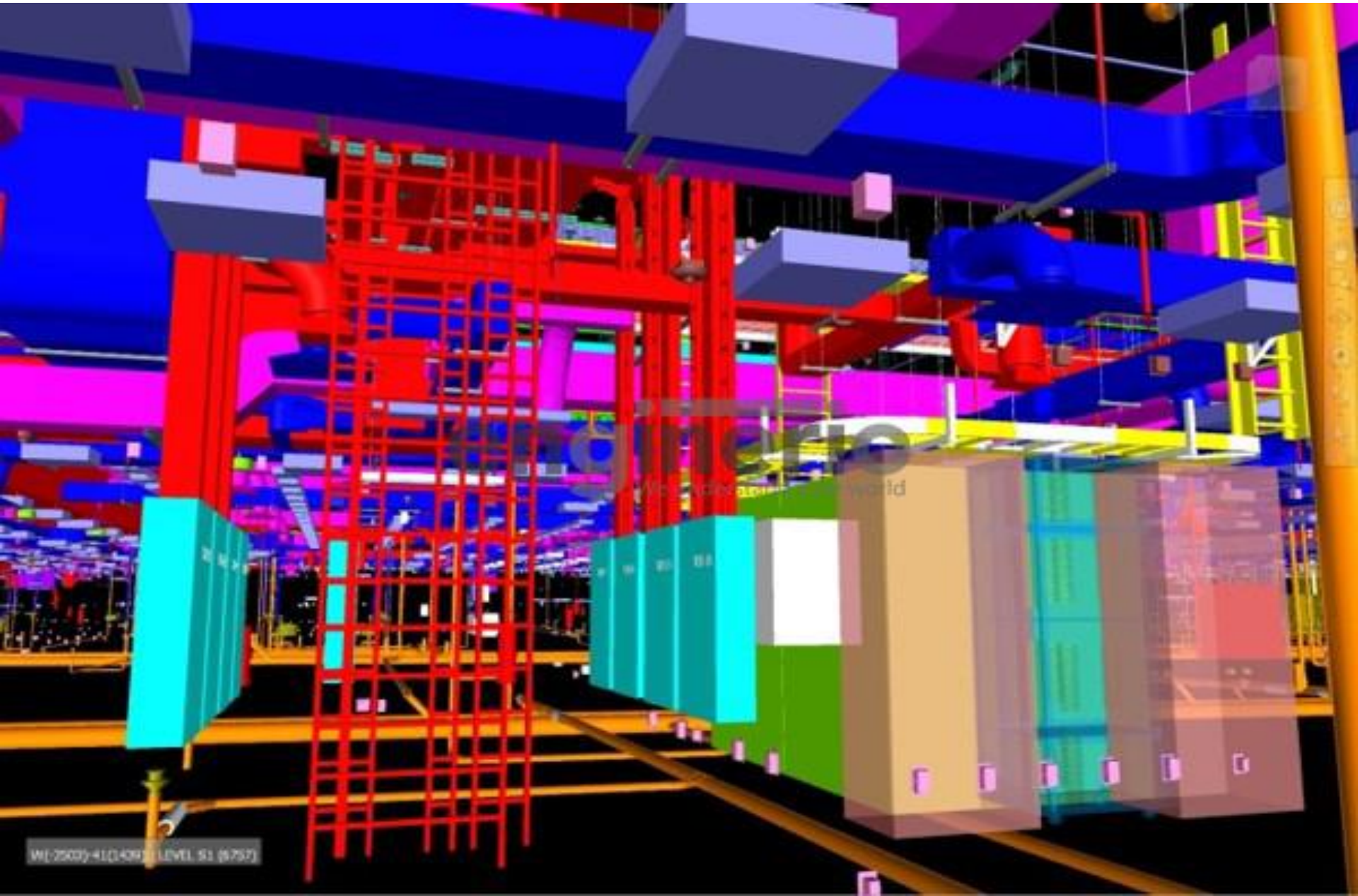
# Revit Dynamo Plugin – for parametric façade



- LIGHT
- MID
- FULL
- ABCDEF
- CANCER AWARENESS
- SAGE



# MEP BIM





## Exterior Rendered views – 3dsmax





## Exterior Rendered views – 3dsmax





## Interior Rendered views – 3dsmax





## Interior Rendered views – 3dsmax





**engineerio**  
We understand your world

Thank you